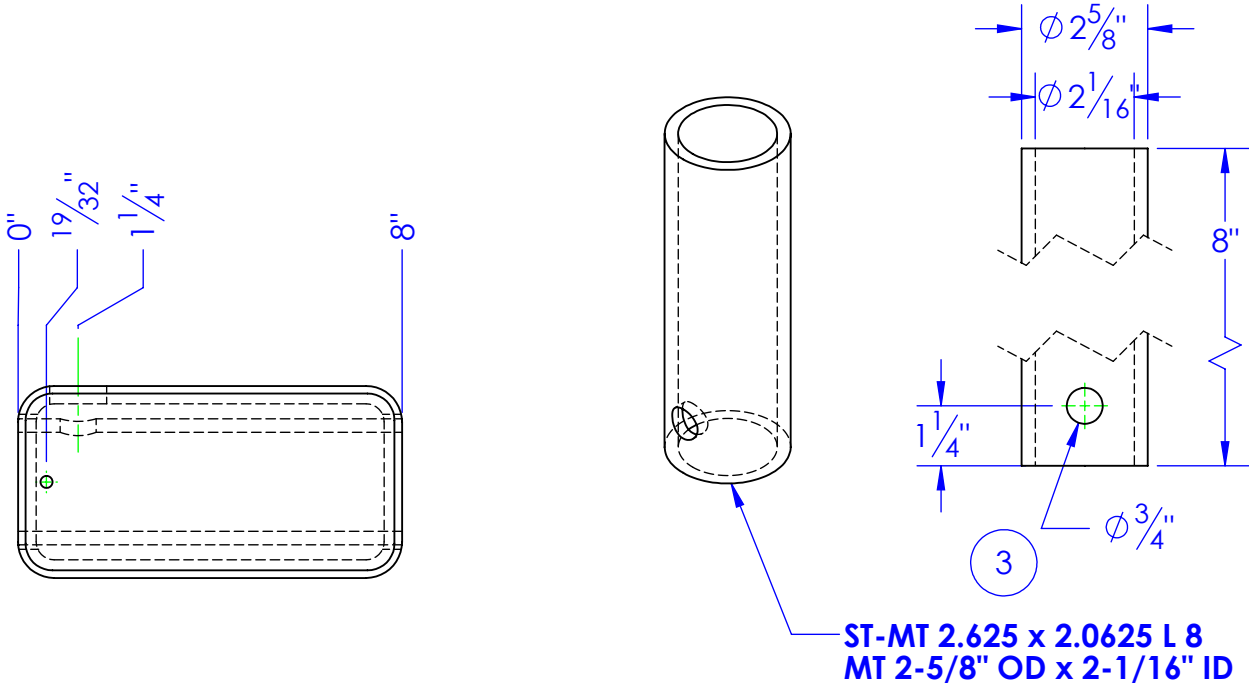
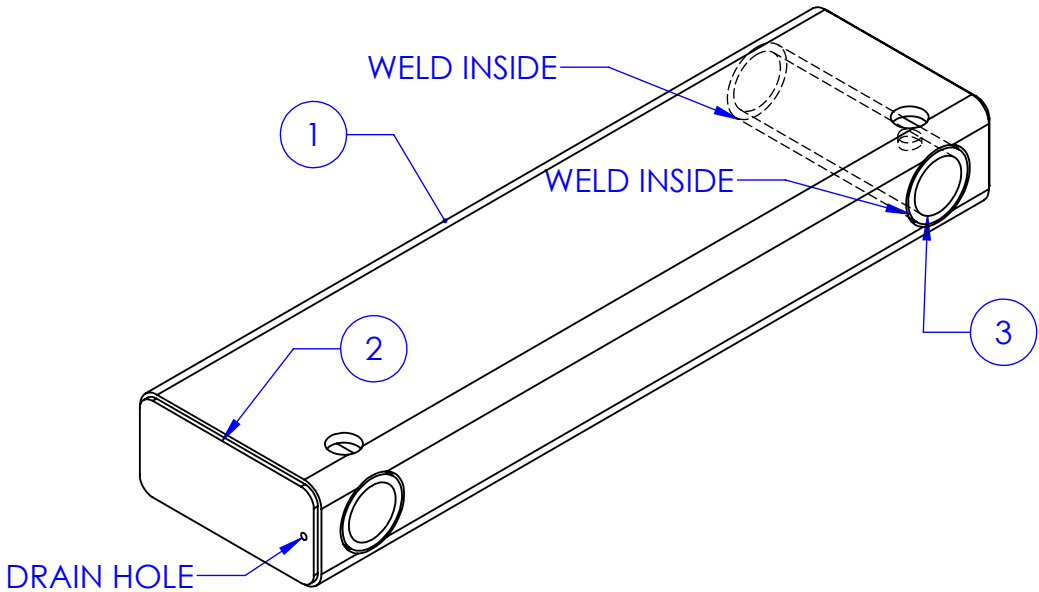
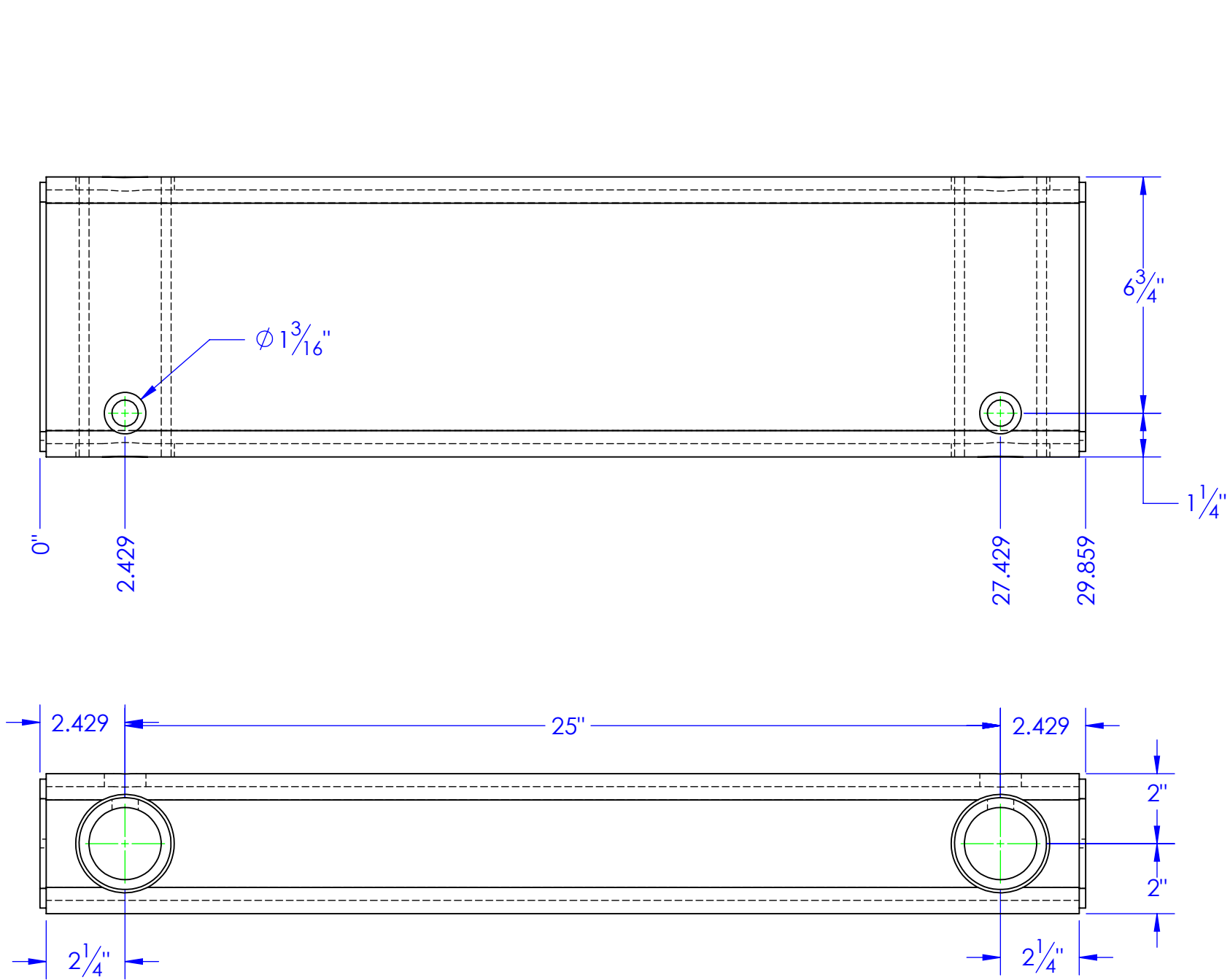


ITEM NO.	PART NUMBER	DESCRIPTION	MATERIAL	DRAWING #	QTY.
1	FP-SPK-8X4	REAR LIFT TUBE, PROSPEAR	RT 8x4x3/8	15-2405	1
2	FP-SPK-102	END CAP, REAR ASSEMBLY, SPIKE	7ga. HRS	15-2401	2
3	ST-MT 2.625 x 2.0625 L 8	LENGTH: 8"	MT 2-5/8" OD x 2-1/16" ID	STOCK	2

REV.	REVISIONS DESCRIPTION	DATE	APPROVED
B	UPDATED TO SHOW 8x4 END CAP	4/17/2012	



ST-MT 2.625 x 2.0625 L 8  
MT 2-5/8" OD x 2-1/16" ID

**PROPRIETARY AND CONFIDENTIAL**  
THE INFORMATION CONTAINED IN THIS DRAWING IS THE SOLE PROPERTY OF <INSERT COMPANY NAME HERE>. ANY REPRODUCTION IN PART OR AS A WHOLE WITHOUT THE WRITTEN PERMISSION OF <INSERT COMPANY NAME HERE> IS PROHIBITED.

UNLESS OTHERWISE SPECIFIED:  
DIMENSIONS ARE IN INCHES  
TOLERANCES:  
FRACTIONAL ± 1/16  
ANGULAR: MACH ± 1 BEND ±  
TWO PLACE DECIMAL ± 0.10  
THREE PLACE DECIMAL ± 0.005  
MATERIAL  
DO NOT SCALE DRAWING

DRAWN	NAME	DATE	P.O. BOX 248, SABETHA KS. 66534 (785) 284-3674 FAX (785) 284-3931		
PART #	HEATH	6/4/2012	<b>TRIPLE C</b> INC.		
ASM #		FP-SPK-106			
COMMENTS:			SIZE	DWG. NO.	REV
CROSS TUBE, LOWER REAR ASSEMBLY, PS			B	15-1402 B	B
			SCALE: 1:4	WEIGHT: 76.86	SHEET 1 OF 1